

Instructions for building a 3' x 4' warp-proof concrete flat table

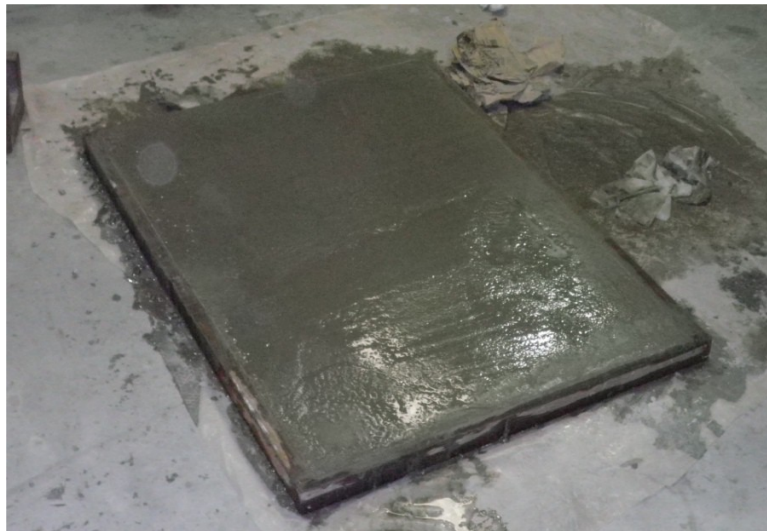
A flat table is key to building straight frames. Melamine chip board is fine for awhile but it will eventually warp, especially if left outside.

Build a long lasting, warp-proof flat table out of reinforced concrete with a poured epoxy surface. Find a mostly flat floor to work on. Lay down a strong plastic sheet (Visqueen) that's at least 4 mils thick.

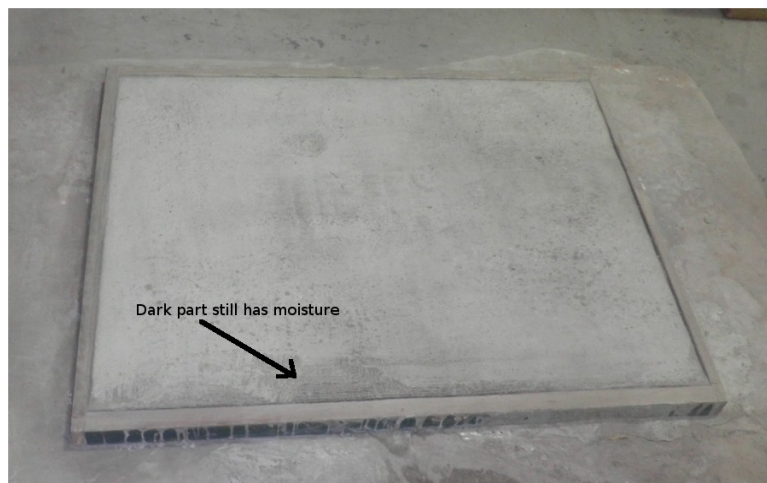
Build a frame out of 2 x stock (2 x 2 or 2 x 4) with the inside dimensions at least 3 feet x 4 feet to match the Calfee DIY Kit standard drawing size. Take your time leveling the form with shims as needed. Use a good level.

Add rebar or wire mesh, suspending it in the middle of the forms.

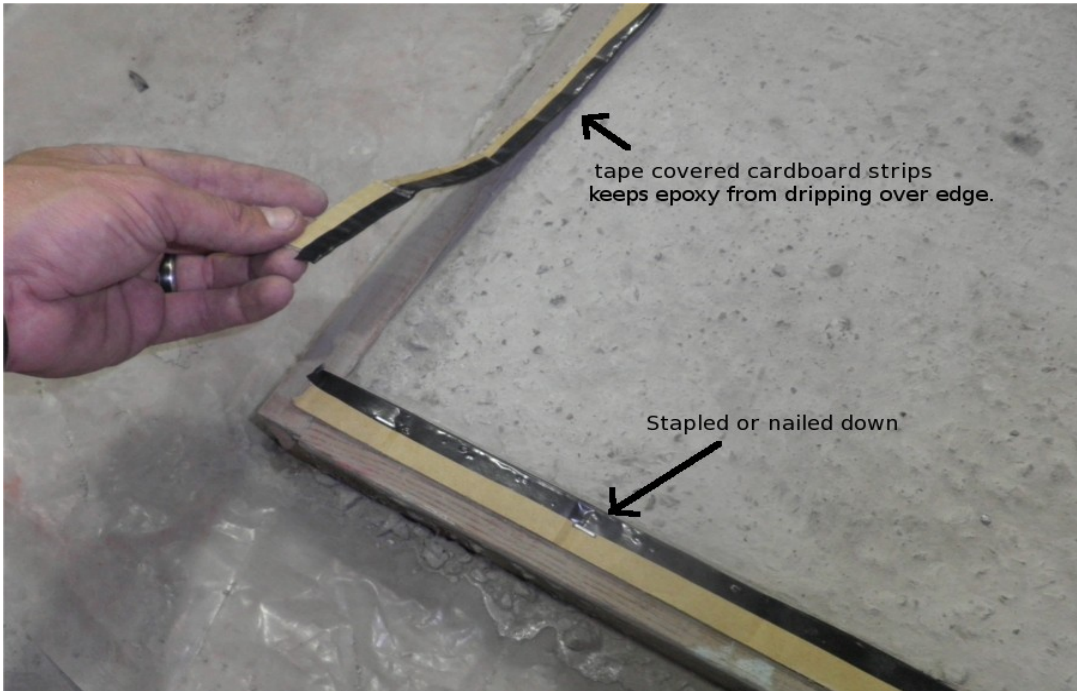
Mix and pour concrete into the forms. Scree to the top of the forms. Use an edging tool along the forms.



Concrete poured and screed into leveled 2 x 2 forms



Let dry thoroughly (a few days)



Add epoxy "forms" made of corrugated cardboard strips covered with electrical tape.



Mix and pour "slow curing", non-blushing epoxy



Let it flow and settle out, using a heat gun if ambient temps are cold.



Let cure fully and remove forms.

Sand, grind or file off any sharp edges. (wear gloves!)



Scrub with pure water only

If you used blushing epoxy, remove tackiness with water.



Epoxy coated concrete slab on strong wooden stand.

Build a sturdy table to support it